

Transfer speed from and to Ftp servers can be monitored by Watches, using the condition *Transferred speed of FTP*. You choose a data sample, which is then submitted to the Ftp server at each test. The watch's setup procedure is described and illustrated in the text below.

Recommendation: If you haven't worked with Watches yet, read the [Introduction to setup of Watches, conditions, actions](#) [1] first.

The watch for monitoring of Ftp transfer speed is added in the C-Monitor client's Scheduler. Launch of the wizard for watch addition is displayed on the next image.

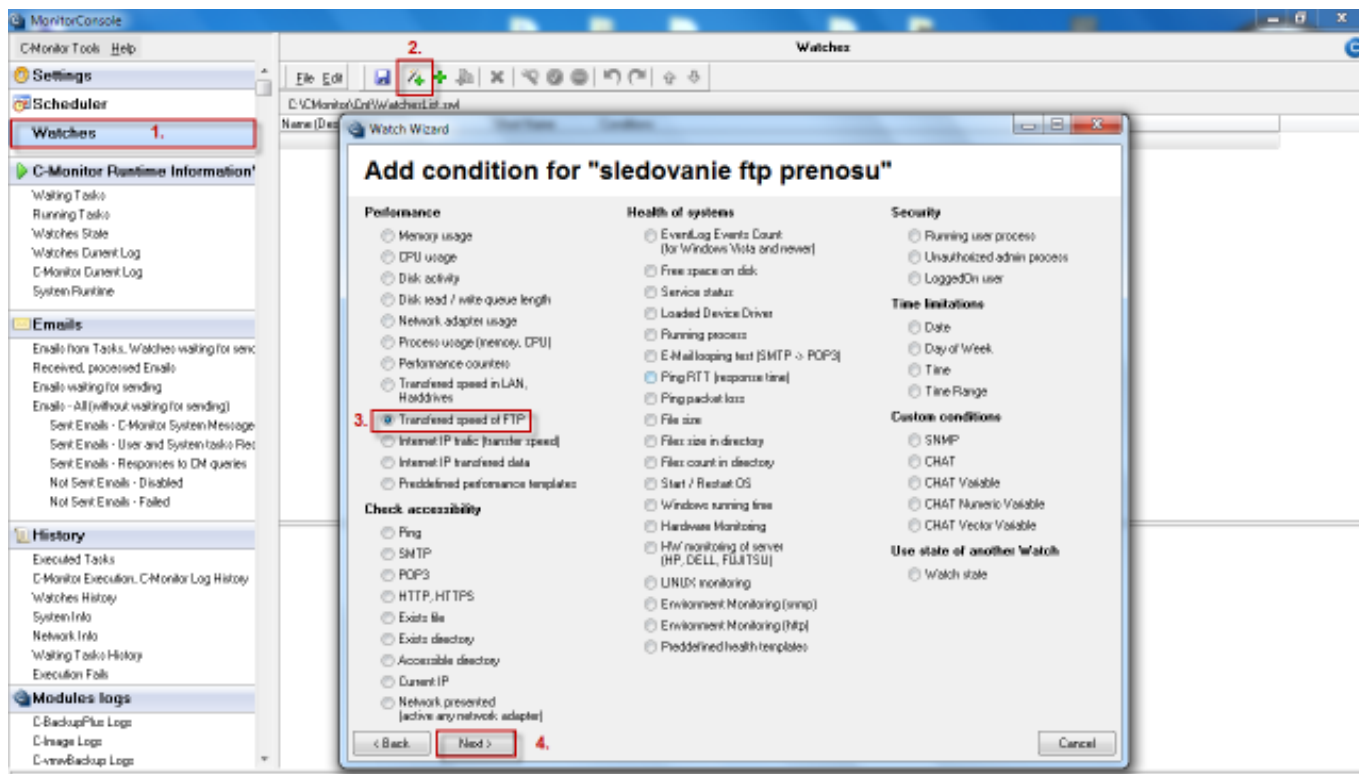
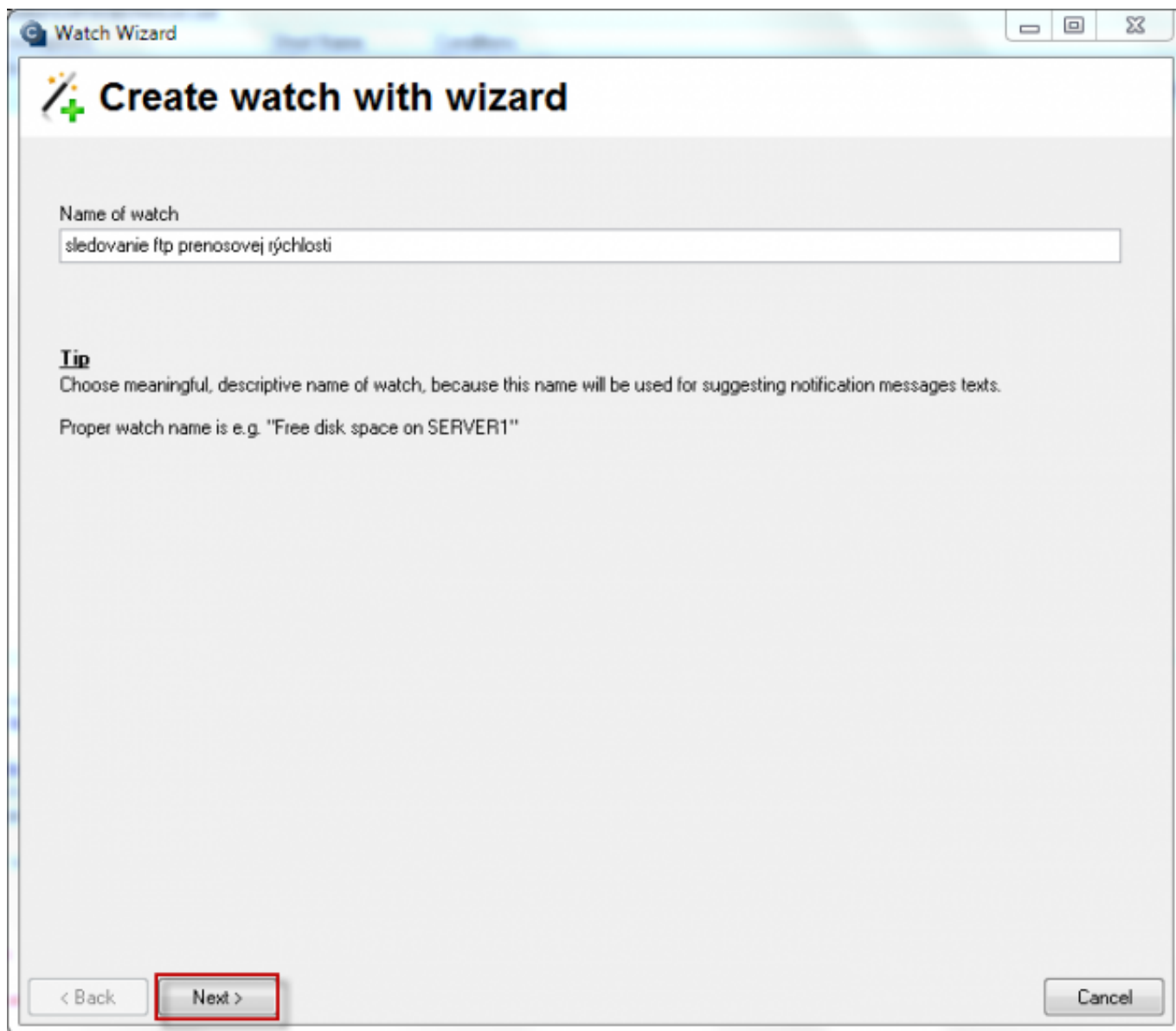


Image: Pridanie watchu pre sledovanie Ftp rýchlosti

Choose a name for the watch in the next window.



Watch Wizard

## Create watch with wizard

Name of watch

**Tip**  
Choose meaningful, descriptive name of watch, because this name will be used for suggesting notification messages texts.  
Proper watch name is e.g. "Free disk space on SERVER1"

< Back   **Next >**   Cancel

Image: Zvolíte si názov Watchu

In the next window, enter address of the Ftp server, username and password to the Ftp server, and in section *Source for upload (local folder)* select data sample from your PC, which is going to be sent to the Ftp server. You'll set a minimal speed, which should be reached, we've set the speed to be minimum 100kb/s for the example case. If the transfer speed was lower than the 100kb/s, the watch would be switched to fail state, and you'd be notified about the decreased transfer speed of the ftp server, either by SMS message or email.

The screenshot shows the 'Watch Wizard' window with the title 'Transfer speed of FTP'. The configuration fields are as follows:

- FTP Server:** ftp.vasafp.sk
- FTP Port:** 21
- FTP User:** ftptemp
- (FTP Password):** [Masked with asterisks]
- (FTP Account):** [Empty]
- Mode:** Passive (dropdown)
- FTP Folder:** temp
- Source for upload (local folder):** C:\Users\Jura\Desktop\testftp (with folder icon)
- (File Name or File Mask (for down/upload)):** [Empty]
- Speed of:** Upload (Source->FTP) (dropdown)
- Operator:** > (dropdown)
- Speed:** 100
- Unit:** kB/s (dropdown)
- Test Period:** 30
- Unit:** min (dropdown)
- (Timeout in sec):** [Empty]
- Value from this condition send to CM server:**
  - ☒ If value changes more than 10 kB/s
  - ☐ Always
  - ☐ Never
- ☐ Assess the state of watch

Navigation buttons at the bottom: '< Back', 'Next >', and 'Cancel'.

Image: Nastavíte parametre pre monitoring Ftp rýchlosti

The Watch's status with currently measured values can be viewed in the section Watch state in C-Monitori client's scheduler, as displayed on the following image.

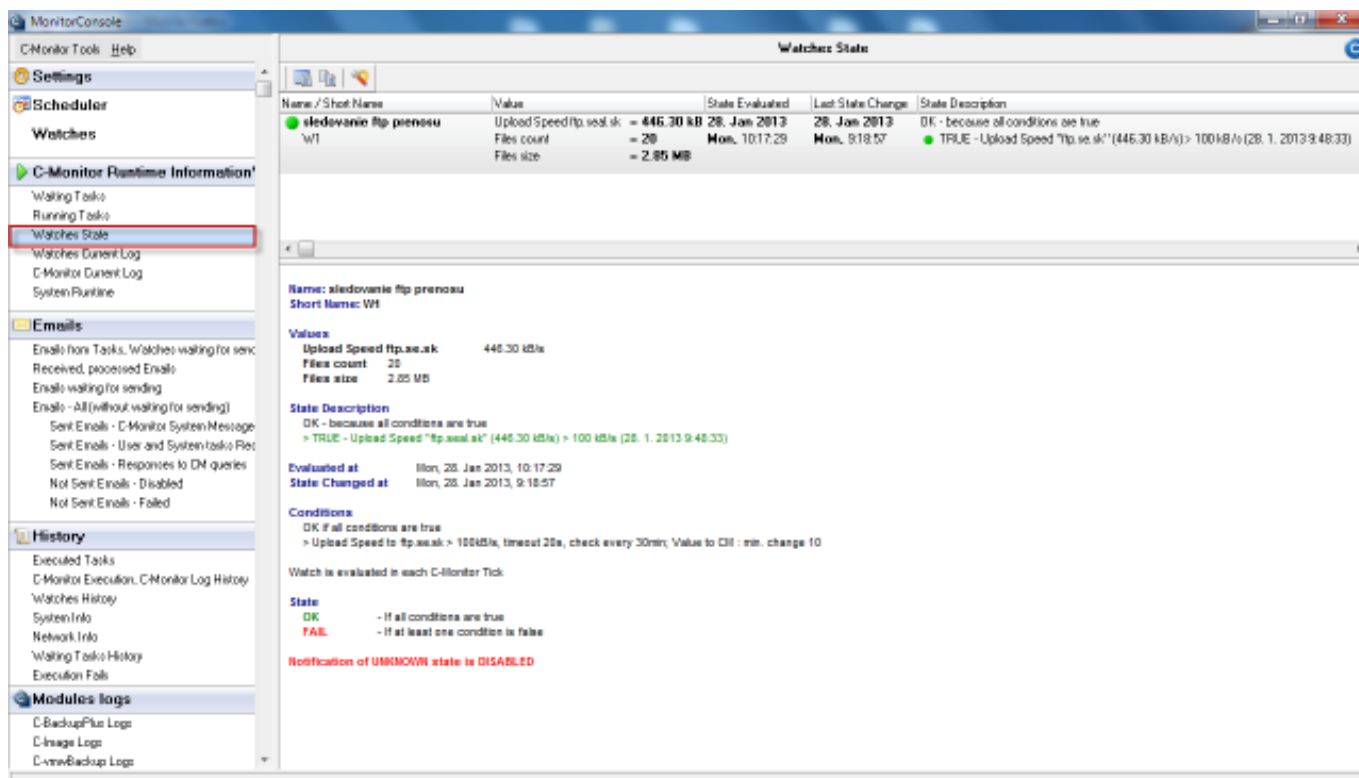


Image: Zobrazenie stavu Watchu cez C-Monitor klient console

A view of the watch's state can be also accessed through CM portal, in the section *Presentation and Evaluation* -> *Presentation* -> *Watches (Online monitoring)*, where you select the PC where this monitoring is configured using the upper filter, as you can see on the next image.

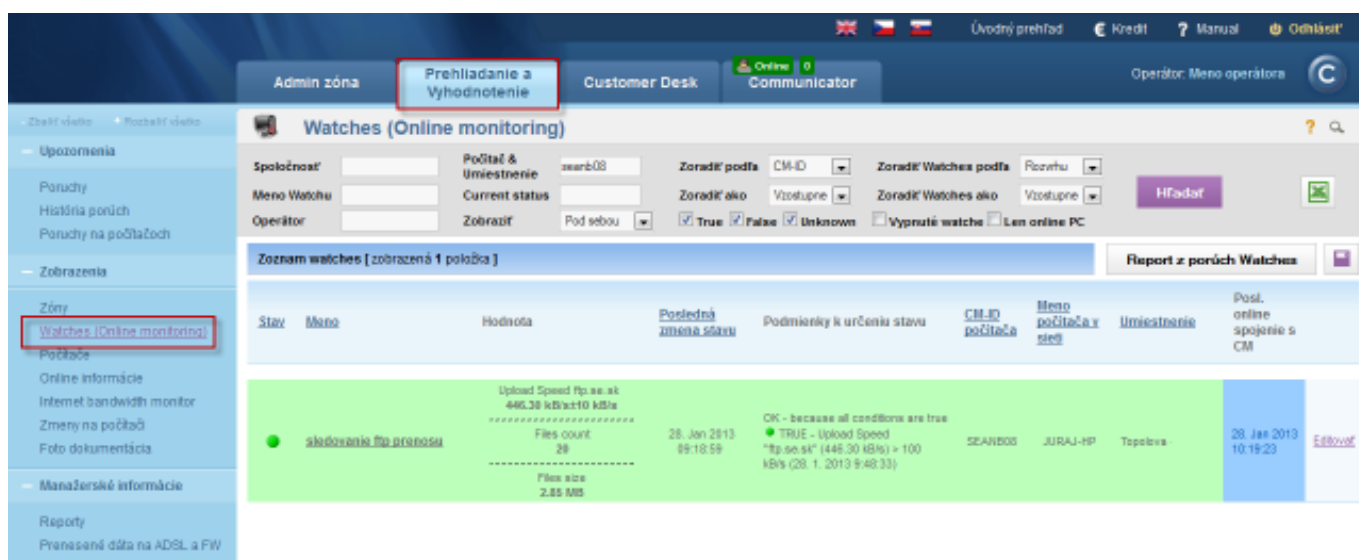
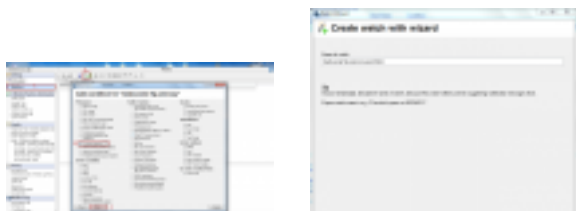


Image: Zobrazenie stavu watchu cez CM portál

Date:

01/20/2013 External Links:

[Ftp speed via Online information](#) [2] Images:



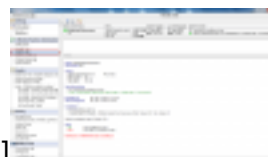
[3]



[4]



[5]



[6]



[7]

## Links

- [1] <https://customermonitor.co/how-cm-works-0/monitoring-and-diagnostics/introduction-setup-online-monitoring-watches>
- [2] <https://customermonitor.co/how-cm-works-0/monitoring-and-diagnostics/outages-and-quality-internet-connections/ftp-speed-online>
- [3] <https://customermonitor.co/sites/default/files/ftp%20cez%20watch.png>
- [4] <https://customermonitor.co/sites/default/files/ftp%20watch%202.png>
- [5] <https://customermonitor.co/sites/default/files/ftp%20watch%204.png>
- [6] <https://customermonitor.co/sites/default/files/ftp%20watch%205.png>
- [7] <https://customermonitor.co/sites/default/files/ftp%20watch%206.png>