

[View of an internet line quality in the section Online information](#)

[Turning on monitoring of Ping PL,RTT](#)

Monitoring of an internet line quality through Online information is enabled defaultly on every computer, and testing of Ping PL, RTT is realized to website www.google.sk in periodic intervals. Evaluation is done automatically and the results of these tests are displayed separately for each device. You can view the results in the section *Presentation and Evaluation -> Presentation -> Online information* , as you can see on the next image

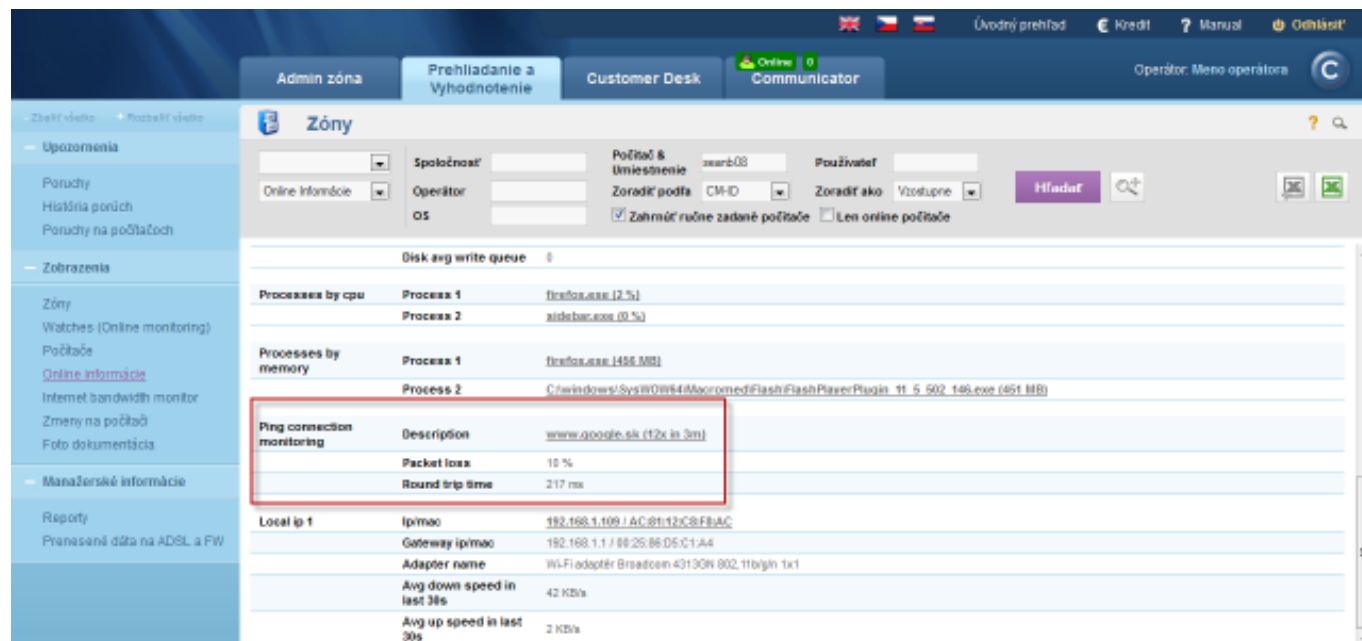


Image: Zobrazenie Ping PL,RTT cez Online informácie

A reliable internet line should have zero packet loss even for higher loads, and response RTT vary according to type of the line. You should have **the following typical RTT values for your measurements:**

DSL ...cca 15-70ms

UPC (coaxial) ...cca 10-30ms

Optic ...cca 3-10ms

FWA 10.5GHz, 26GHz - cca 10ms

mobile ...HSDPA cca 70-100ms, GPRS over 150ms

Wimax - over 50ms

Wifi 5.4GHz links ...cca 4-10ms

In case that internet connection quality is not evaluated automatically, and you also can't see information about Ping PL,RTT at Online information, you must first enable the monitoring of Ping PL, RTT.

Activation and setup of parameters for monitoring of Ping PL and RTT may be realized on two places.

1.Option - In section *Admin zone -> Main menu -> Computers -> choose a specific computer and move to the tab C-Monitor settings, section Parameters for monitoring of PING PL and RTT*, as displayed on the next image. Select the option *enable monitoring of PING PL AND RTT* by which you also gain access to setup of evaluation, where you can adjust particular parameters according to

your needs.

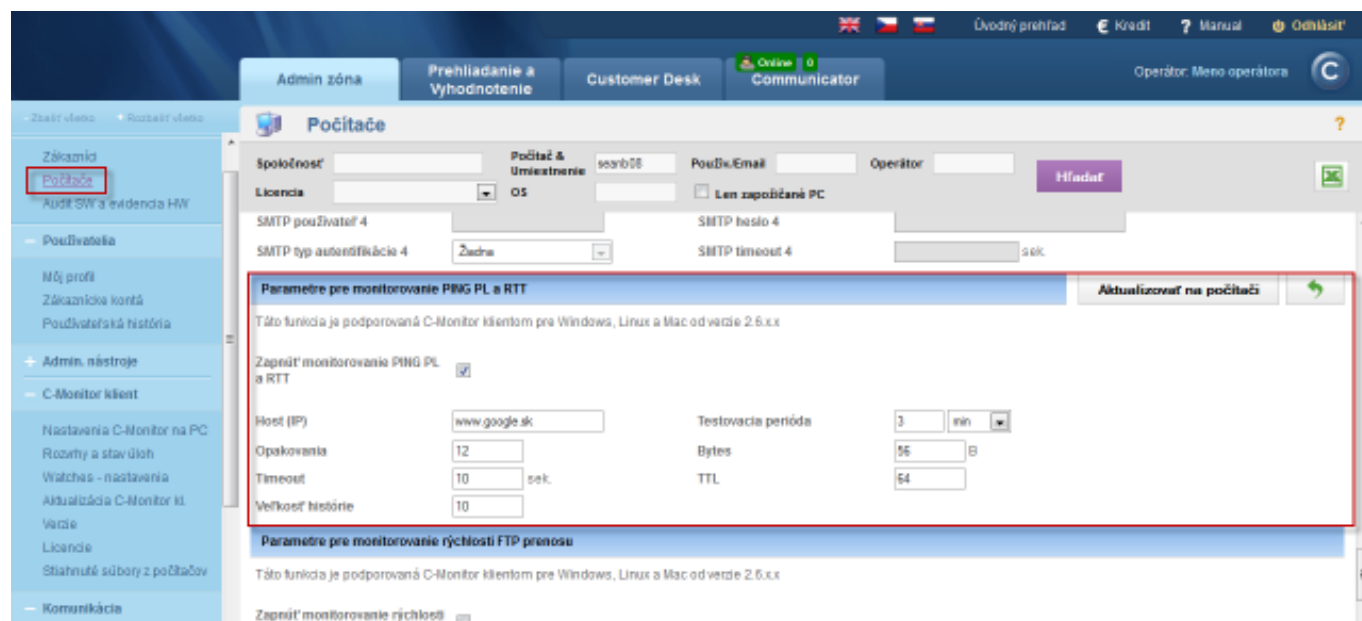


Image: Nastavenie monitoringu Ping PL,RTT v časti Admin zóna -> Počítače -> záložka nastavenie C-Monitora

2. Option - To change settings on more devices, go to section *Admin zone -> C-Monitor settings on PC*, select computers, whose settings you want to change and press *Edit* selected. Then, in the section *Parameters for monitoring of PING PL and RTT*, select the option *Enable monitoring of PING PL and RTT*, as you can see on the next image.

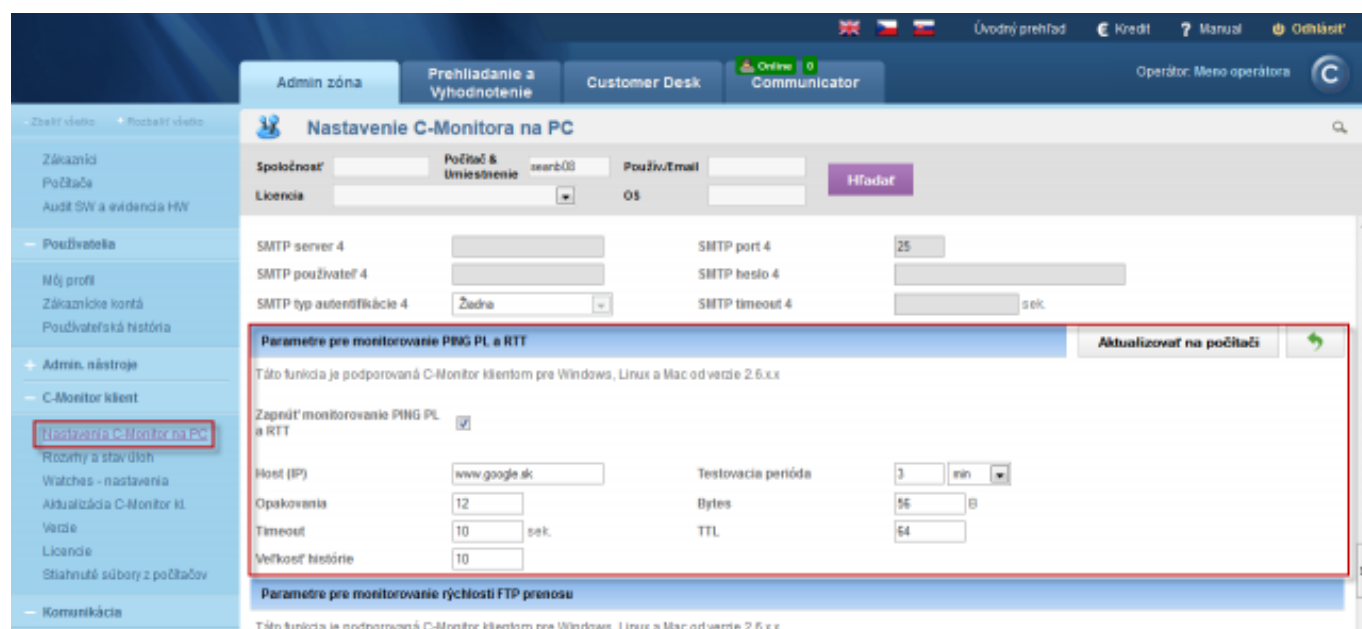
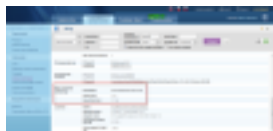


Image: Nastavenie a editácia Ping PL,RTT pre viacero pc naraz

Date:

01/20/2013 External Links:

[Ping PL,RTT in the Info panel](#) [1] Images:



[2]



[3]



[4]

Links

[1] <https://customermonitor.co/how-cm-works-0/monitoring-and-diagnostics/outages-and-quality-internet-connections/ping-pl-rtt-info>

[2] <https://customermonitor.co/sites/default/files/pinPL%2CRTT%20z%20online%20info.png>

[3] https://customermonitor.co/sites/default/files/nastavenie%20PL_RTT%20cez%20cm%20portalpoci-tace.png

[4] https://customermonitor.co/sites/default/files/nastavenie%20PL_RTT%20cez%20cm%20portal.png