

[Execute Command Line](#)

[Activate Trigger](#)

[Control Service](#)

[Display Message to User](#)

[Add Message to Log File](#)

[Add Message to Event Log](#)

[Send SMS](#)

[Send E-Mail to custom E-Mail Addresses](#)

Setup of actions through C-Monitor console:

Execute Command Line - Using this action, we can launch execution of any command through command line.

Step 1 - in the selectbox, choose "Execute Command Line"

Step 2 - write the command that should be executed (2a), or list out the executing file through windows explorer (2b)

Step 3 - sign validity of the command

The screenshot shows the 'Watch Wizard' dialog box with the title 'Set a Start action for "Network presented"'. The 'If state of the watch changes to FAIL, perform START action - execute task, display, log, send notifications...' checkbox is checked. The 'Description of FAIL state' field contains 'Run test.bat'. The 'Enabled' checkbox is checked. The 'If state of the watch changes to FAIL and is FAIL more than 0 Sec do:' section shows a dropdown menu with 'Execute Command Line' selected (labeled 1). Below this, a text field contains 'c:\scripts\test.bat' (labeled 2a). To the right of the text field are two icons: a key icon (labeled 3) and a folder icon (labeled 2b). Below the text field are several unchecked checkboxes: 'Display Message to User', 'Add Message to Log File', 'Add Message to EventLog', 'Send SMS (via CM server, must be supported by CM server)', and 'Send E-Mail to custom E-Mail Addresses'. At the bottom are '< Back', 'Next >', and 'Cancel' buttons.

Image: Obrázok: Watches Action - Execute command line

Activate Trigger - This action activates a trigger, which can be bound to a variety of other C-Monitor tasks in CM Scheduler. For example, if a watch changes its state, it'll activate trigger1, whose activation is required for the waiting task C-Defrag. When trigger1 is activated, the task C-Defrag registers that trigger1 is active and is then executed.

Step 1 - from the selectbox, choose "Activate Trigger"

Step 2 - choose a meaningful name for the trigger, so it could be easily identified in other tasks

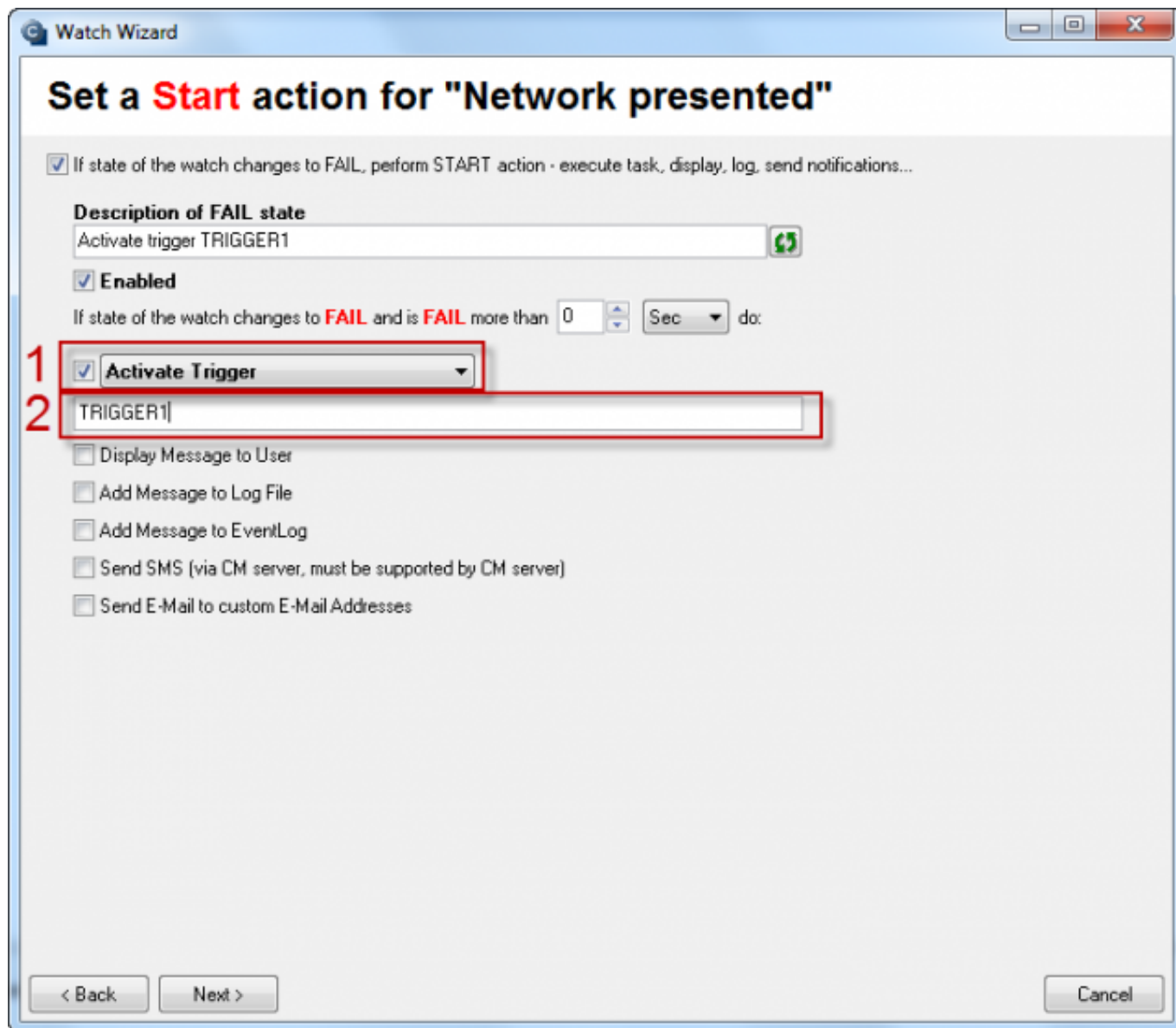


Image: Obrázok: Watches Action - Activate trigger

Control Service - Serves to govern any service. Using this action, the service can be launched, stopped, restarted.

Step 1 - from the selectbox, choose "Control Service"

Step 2 - choose from the options of controlling the service "start", "stop", "restart"

Step 3 - List out the service, which will be controlled by this action

Watch Wizard

Set a **Start** action for "Network presented"

☒ If state of the watch changes to **FAIL**, perform **START** action - execute task, display, log, send notifications...

Description of FAIL state

Start OpenVPN Service

☒ **Enabled**

If state of the watch changes to **FAIL** and is **FAIL** more than 0 Sec do:

1 ☒ **Control Service**

2 ☒ **Start** OpenVPNService 3

☐ Display Message to User

☐ Add Message to Log File

☐ Add Message to EventLog

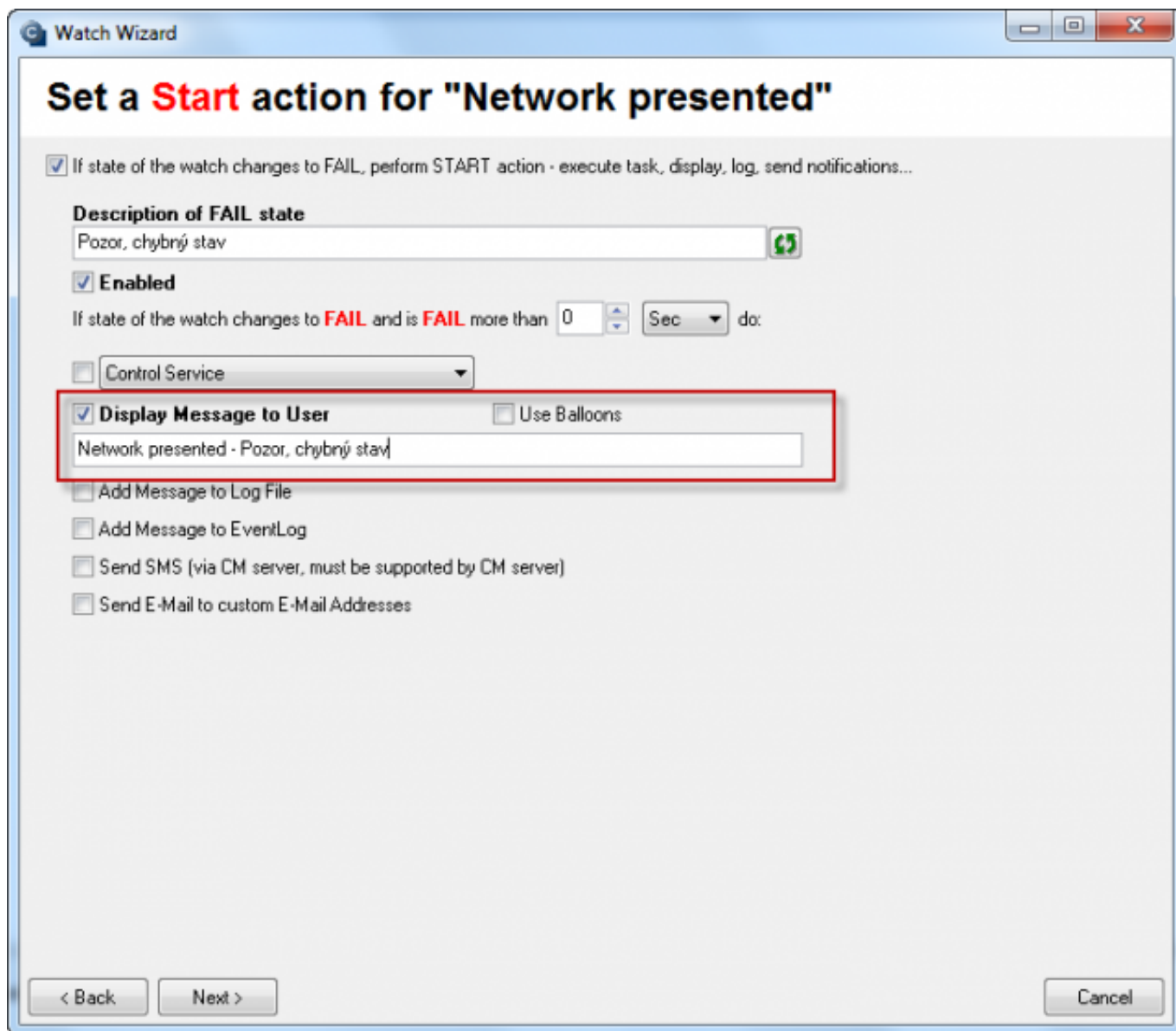
☐ Send SMS (via CM server, must be supported by CM server)

☐ Send E-Mail to custom E-Mail Addresses

< Back Next > Cancel

Image: Obrázok: Watches Action - Control Service

Display Message to User - Serves to show an informative message on the user's desktop. The message can be also displayed as a pop-out balloon in system tray on the user's desktop. For this option, select "Use Balloons".



Watch Wizard

Set a **Start** action for "Network presented"

☒ If state of the watch changes to **FAIL**, perform **START** action - execute task, display, log, send notifications...

Description of FAIL state
Pozor, chybný stav

☒ **Enabled**
If state of the watch changes to **FAIL** and is **FAIL** more than 0 Sec do:

☐ Control Service

☒ **Display Message to User** ☐ Use Balloons
Network presented - Pozor, chybný stav

☐ Add Message to Log File
☐ Add Message to EventLog
☐ Send SMS (via CM server, must be supported by CM server)
☐ Send E-Mail to custom E-Mail Addresses

< Back Next > Cancel

Image: Obrázok: Watches Action - Display message to User

Add Message to Log File - Using this action, you can create an independent log file, into which new records of executing this action are going to be written.

At setup of this action, enter the path to the log file that you want records to be written into (1), or list out an existing log file (2). If necessary, edit the record that is going to be written into the log (3).

Watch Wizard

Set a **Start** action for "Network presented"

☒ If state of the watch changes to **FAIL**, perform **START** action - execute task, display, log, send notifications...

Description of FAIL state
Pozor, chybný stav

☒ **Enabled**
If state of the watch changes to **FAIL** and is **FAIL** more than 0 Sec do:

☐ Control Service

☐ Display Message to User

☒ **Add Message to Log File**

File Name: C:\CMonitor\Logs\log.txt

Message: Network presented - Pozor, chybný stav

☐ Add Message to EventLog

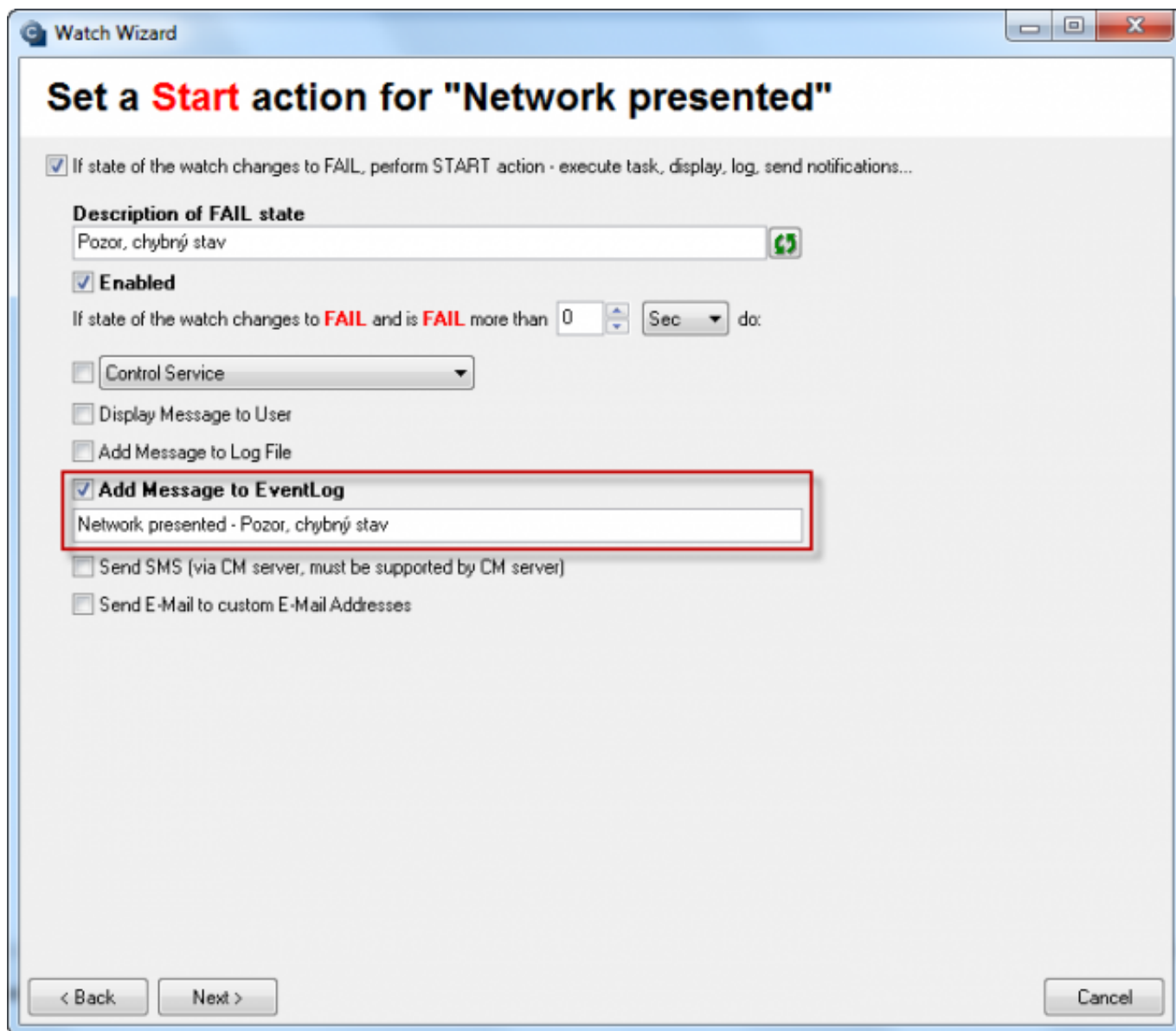
☐ Send SMS (via CM server, must be supported by CM server)

☐ Send E-Mail to custom E-Mail Addresses

< Back Next > Cancel

Image: Obrázok: Watches Action - Add message to Log File

Add Message to Event Log - Using this action, you can set writing of logs directly into the operating system's Event Log



Watch Wizard

Set a **Start** action for "Network presented"

☒ If state of the watch changes to **FAIL**, perform **START** action - execute task, display, log, send notifications...

Description of FAIL state
Pozor, chybný stav

☒ **Enabled**

If state of the watch changes to **FAIL** and is **FAIL** more than 0 Sec do:

☐ Control Service

☐ Display Message to User

☐ Add Message to Log File

☒ **Add Message to EventLog**
Network presented - Pozor, chybný stav

☐ Send SMS (via CM server, must be supported by CM server)

☐ Send E-Mail to custom E-Mail Addresses

< Back Next > Cancel

Image: Obrázok: Watches Action - Add message to Event Log

Send SMS - Using this action, you can set sending of notification SMS to any tel. number, which is in the given customer's contacts list

[Read more about management of SMS contacts here.](#)

Modify Watch

Conditions Start Actions 1

Description of FAIL state
Pozor, chybný stav

☒ **Enabled**

If state of the watch changes to **FAIL** and is **FAIL** more than 0 Sec do:

☐ Execute Command Line

☐ Display Message to User

☐ Add Message to Log File

☐ Add Message to EventLog

☒ **Send SMS (via CM server, must be supported by CM server)**

Network presented - Pozor, chybný stav - \$computer\$ \$company\$

Send SMS To	
Boris	421908869372

☐ Send E-Mail to custom E-Mail Addresses

Delete Add New

Tip:
[Add New Repeat Action](#)
[Add New End Action](#)

Edit with Wizard OK Cancel

Image: Obrázok: Watches Action - Send SMS

Send E-Mail to custom E-Mail Addresses - An email is going to be sent to any mail address when this action is executed.

Step 1 - Choose the option "Send E-Mail to custom E-Mail Addresses"

Step 2 - Enter address of the sender

Step 3 - Enter address or more addresses of the receiver(s)

Step 4 - Test function of SMTP communication, to confirm that sending of the notification E-mails from C-Monitor is functional.

Warning : Emails from Watches sent from C-Monitor by this action to your email address cannot be forwarded through the SMTP server cmportal.eu, which is designed to deliver logs to CM Server (that would be an illicit SMTP relay). We recommend sending these messages through CM Server, to which the message can also be delivered through http communication between C-Monitor and CM Server, or set a custom SMTP server 3,4. How to verify, or adjust the setup is described in the article [Sending of notification messages from C-Monitor](#) [1].

Modify Watch

Conditions Start Actions 1

Description of FAIL state
Pozor, chybný stav

☒ **Enabled**

If state of the watch changes to **FAIL** and is **FAIL** more than 0 Sec do:

☐ Execute Command Line

☐ Display Message to User

☐ Add Message to Log File

☐ Add Message to EventLog

☐ Send SMS (via CM server, must be supported by CM server)

☒ **Send E-Mail to custom E-Mail Addresses** **1**
For E-Mail sending will be used C-Monitor SMTP settings

From: watches@customerserver.sk **2**

To: technik@customer.sk **3**

Subject: Network presented - Pozor, chybný stav

Network presented - Pozor, chybný stav

Note: For sending are used SMTP 3, 4 settings, if they are not set, SMTP 1, 2 are used.

Test Send E-Mail **4**

Delete Add New

Edit with Wizard OK Cancel

Image: Obrázok: Watches Action - Send E-Mail

Setup of actions through CM Portal:

As well as the C-Monitor console, CM Portal also offers addition of actions to a CM watch. Actions are set at [creation of the watch via CM portal](#) [2], or they may be added additionally through CM Portal -> Admin zone -> Watches - settings -> Display watches -> Edit -> Add action

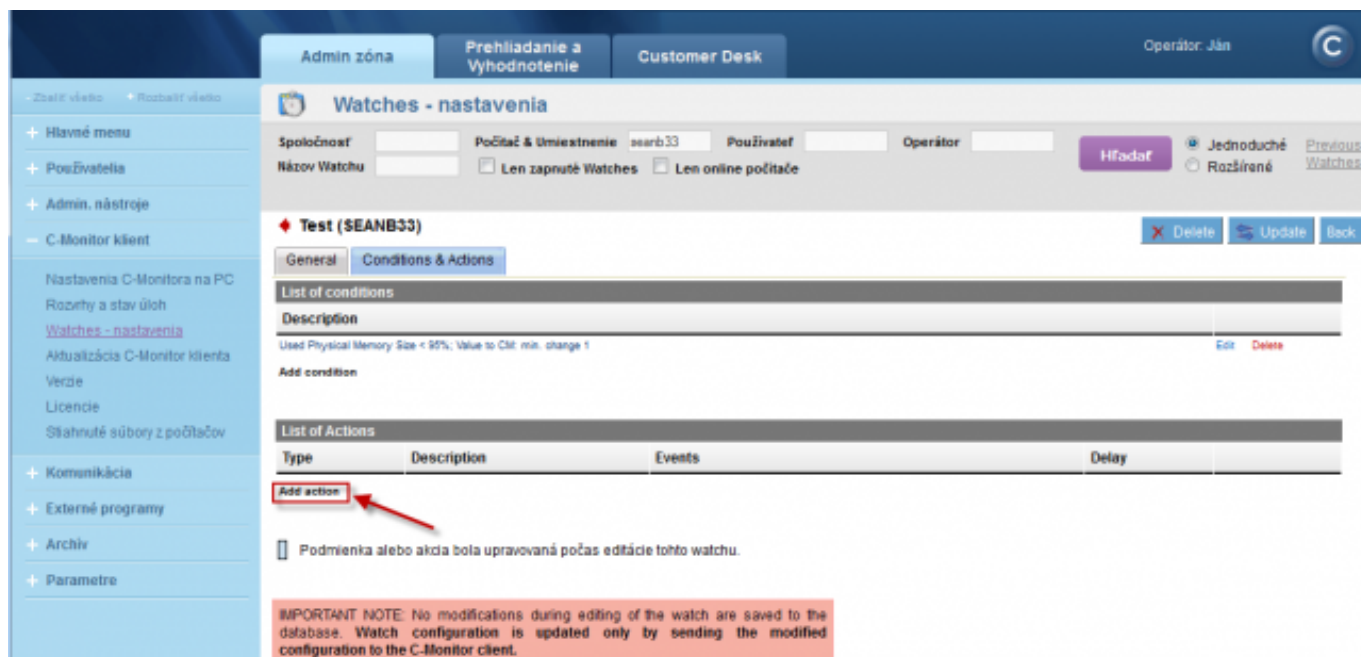


Image: Obrázok: CM Portal - Add Watches Action

The following creation is the same as the setup through [C-Monitor console](#). It only varies in the user interface.

In step 1, choose whether it's a Start, Repeat or End action.

In step 2, set the required action likewise as through [C-Monitor console](#).

In step 3, save the settings to CM Portal by pressing "Apply".

The action can now be edited, or possibly deleted (1), or send its configuration to C-Monitor on the client computer (2).

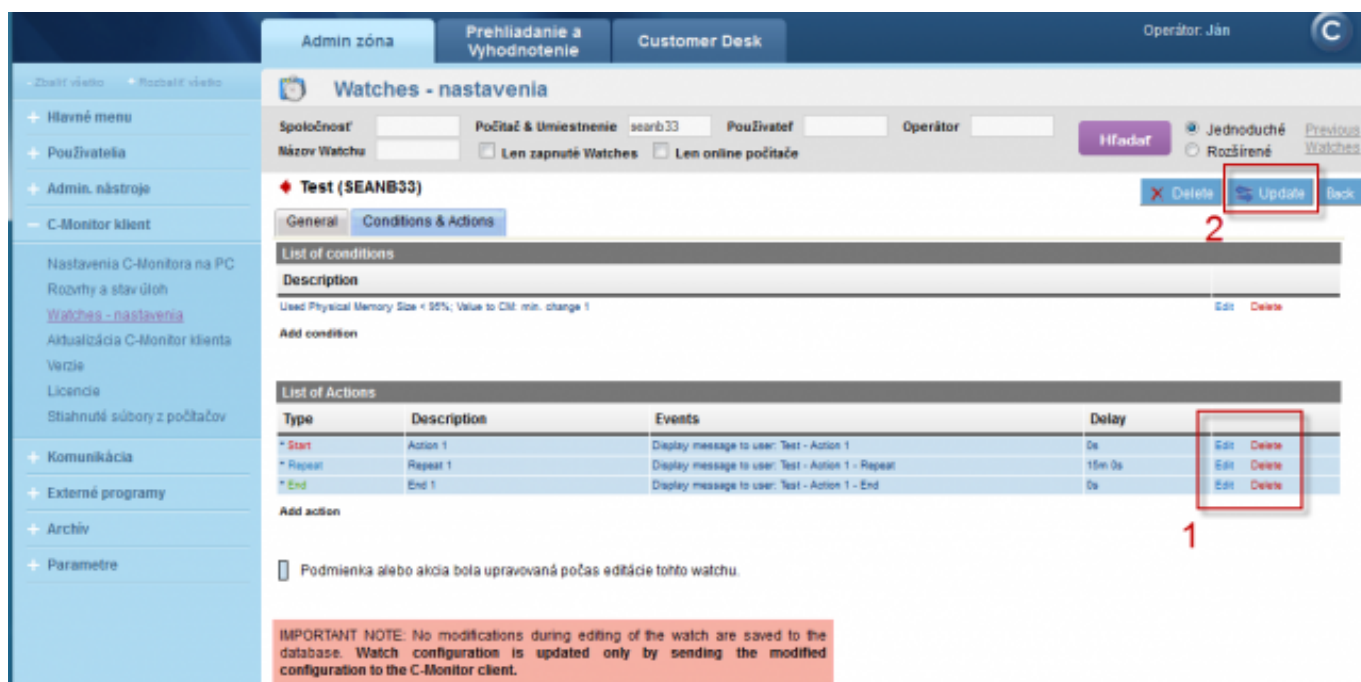


Image: Obrázok: CM Portal - Add Watches Action Step 3

After sending configuration of the actions to C-Monitor, they'll be applied in the watch after a short time, and begin to fulfill their purpose.

Management of SMS contacts

CM Portal offers an option to add SMS contacts that can be used for CM-Watches notifications. Accounts of SMS contacts are created automatically at creation of the customer's account on CM Portal.

Management of SMS contacts is accessible through Admin zone -> Customers -> SMS contacts for Watches.

The screenshot shows the 'Zákazníci' (Customers) section in the Admin Zone. The 'SMS kontakty pre Watches' tab is selected. Below the tabs, there is a section titled 'SMS kontakty pre Watches' with a description: 'Zadáte SMS kontakty, na ktoré sa bude dať nastaviť notifikácia zmeny stavu v C-Monitoru vo Watches / Akcia. Na počítače budú poslané sms kontakty nastavené v tejto záložke a v nastavení v jednotlivých počítačoch. Telefónne čísla zadávajú v medzinárodnom tvare.' Below this, there are two buttons: 'Pridať SMS kontakt' and 'Aktualizovať na počítačoch'. A red arrow points to the 'Pridať SMS kontakt' button. Below the buttons, there are two tables: 'SMS kontakty operátorov priradených k zákazníkovi' and 'SMS kontakty pre zákaznické konto'.

SMS kontakty operátorov priradených k zákazníkovi			
Operátor 1	Ján	Tel. číslo	+421 905 905 905
Operátor 2	Miroslav	Tel. číslo	+421 905 905 905

SMS kontakty pre zákaznické konto			
Konto 1	Kšrs	Tel. číslo	+421 905 905 905
Konto 2	Michals	Tel. číslo	+421 905 905 905

Image: Obrázok: Manažment SMS kontaktov

Date:

04/06/2012



[3]



[4]



[5]



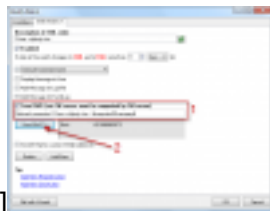
[6]



[7]



[8]



[9]



[10]



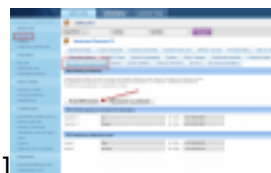
[11]



[12]



[13]



[14]

Links

[1] <https://customermonitor.co/how-cm-works-0/components-and-architecture-cm/sending-notification-messages-c-monitor>

[2] <https://customermonitor.co/how-cm-works-0/monitoring-and-diagnostics/introduction-setting-online-monitoring-watches/basic-wat-0>

[3] https://customermonitor.co/sites/default/files/Execute%20command%20line_0.png

[4] https://customermonitor.co/sites/default/files/Activate%20trigger_0.png

[5] https://customermonitor.co/sites/default/files/Control%20Service_0.png

[6] <https://customermonitor.co/sites/default/files/Display%20Message%20to%20User.png>

[7] <https://customermonitor.co/sites/default/files/Add%20Message%20to%20Log%20File.png>

[8] <https://customermonitor.co/sites/default/files/Add%20Message%20to%20EventLog.png>

[9] <https://customermonitor.co/sites/default/files/Sent%20SMS.png>

[10] <https://customermonitor.co/sites/default/files/Send%20Email.png>

[11] https://customermonitor.co/sites/default/files/Portal_add_action.png

[12] https://customermonitor.co/sites/default/files/Portal_add_action_2.png

[13] https://customermonitor.co/sites/default/files/Portal_add_action_3.png

[14] <https://customermonitor.co/sites/default/files/SMS%20kontakty.png>