

The main purpose of Watches in the solution Customer Monitor is to track values and states of IT system functions in real time, with notification of limit or erroneous values. Watches have a huge share on the main purpose of CM, which is to early and accurately determine errors, thus ensuring a smooth operation of computer equipment. Exact procedure of setup and description of the individual sections of Watches can be found in the section [Introduction to setup of Online monitoring - Watches](#) [1].

In this section we'll show you, where you can check the states of Watches, directly through C-MonitorConsole, but also through CM Portal, as well as view logs and history of the process of Watches.

View of the current state of Watch through C-Monitor client and CM Portal

States of set-up Watches may be viewed directly in the console, in the item Watches State, in the section C-Monitor Runtime Information, as is displayed on the following image

Description of columns of a Watch's current state:

Name/Short Name - name of the Watch and its abbreviation, a green circle means that the Watch is in state OK, red - Fail, gray - Unknown

Value - values that are evaluated by the Watch

State Evaluated - date and time of when the current state of the Watch was evaluated

Last State Change - the last change of the Watch's state

State Description - conditions to determine the state, which are evaluated along with the currently taken values

Name/Short Name	Value	State Evaluated	Last State Change	State Description
monitoring W1	CPU Core #0 = 53 °C CPU Core #1 = 54 °C HDD ST950042 0A5 = 36 °C HDD ST950042 0A5 = 36 °C Current Voltage = 12.89 V	5. Dec 2012 Wed. 15:43:41	4. Dec 2012 Tue. 8:21:43	OK - because all conditions are true TRUE - Hw Mon.: CPU Core #0 (53 °C) < 75 °C (5. 12. 2012 15:43:39) TRUE - Hw Mon.: CPU Core #1 (54 °C) < 75 °C (5. 12. 2012 15:43:39) TRUE - Hw Mon.: HDD ST950042 0A5 (36 °C) < 55 °C (5. 12. 2012 15:43:39) TRUE - Hw Mon.: HDD ST950042 0A5 (36 °C) < 55 °C (5. 12. 2012 15:43:39) TRUE - Hw Mon.: Current Voltage (12.09 V) IN <11.650;12.880> V (5. 12. 2012 15:43:39)
Miesto na disku W2	Free Space C:\ = 67.85 GB	5. Dec 2012 Wed. 15:43:41	5. Dec 2012 Wed. 15:39:41	OK - because all conditions are true TRUE - Free Space on "C:\": 67.85 GB > 10 GB
aktivita disku W3	Disk Activity = 7%	5. Dec 2012 Wed. 15:43:41	5. Dec 2012 Wed. 15:40:41	OK - because all conditions are true TRUE - Disk Activity "" (7%) < 90%
CPU usage W4	CPU System = 0%	5. Dec 2012 Wed. 15:43:41	5. Dec 2012 Wed. 15:39:41	OK - because all conditions are true TRUE - CPU Usage "System" (0%) < 90%
MEMORY USAGE W5	Used Phys. M.S. = 2.61 GB	5. Dec 2012 Wed. 15:43:41	5. Dec 2012 Wed. 15:43:41	FAIL - because at least one condition is false FALSE - Memory Usage "Used Phys. M.S." (2.61 GB) < 2500 MB

Name/Short Name: monitoring
Short Name: W1

Values:
CPU Core #0 = 53 °C
CPU Core #1 = 54 °C
HDD ST950042 0A5 = 36 °C
HDD ST950042 0A5 = 36 °C
Current Voltage = 12.89 V

State Description:
OK - because all conditions are true
TRUE - Hw Mon.: CPU Core #0 (53 °C) < 75 °C (5. 12. 2012 15:43:39)
TRUE - Hw Mon.: CPU Core #1 (54 °C) < 75 °C (5. 12. 2012 15:43:39)
TRUE - Hw Mon.: HDD ST950042 0A5 (36 °C) < 55 °C (5. 12. 2012 15:43:39)
TRUE - Hw Mon.: HDD ST950042 0A5 (36 °C) < 55 °C (5. 12. 2012 15:43:39)
TRUE - Hw Mon.: Current Voltage (12.09 V) IN <11.650;12.880> V (5. 12. 2012 15:43:39)

Evaluated at: Wed. 5. Dec 2012, 15:43:41
State Changed at: Tue. 4. Dec 2012, 8:21:43

Image: Zobrazenie stavu watchu

Information are transferred to CM portal with a few second delay, so you can also use the interface of CM portal to check states. States of Watches can be found at *Presentation and Evaluation -> Presentation -> Watches(Online monitoring)* -> search for a concrete Watch through the upper filter, as displayed on the next image. By pressing the button *Edit*, you can change evaluation parameters

etc. By clicking on the Watch's Name, you'll get a view of the Watch's process history in a table or graphic form.

Stav	Meno	Hodnota	Posledná zmena stavu	Podmienky k určeniu stavu	CM-ID počítača	SRNOM počítača	Umiestnenie	online spojenie s CM
● monitoring		CPU Core #0 47 °C±2 °C CPU Core #1 48 °C±2 °C HDD ST950042 SAS 27 °C±2 °C HDD ST950042 SAS 27 °C±2 °C Current Voltage 12.09 V±0.100 V	5. Dec 2012 14:25:47	OK - because all conditions are true ● TRUE - Hw.Mem.: CPU Core #0 (47 °C) < 75 °C (6. 12. 2012 8:25:53) ● TRUE - Hw.Mem.: CPU Core #1 (48 °C) < 75 °C (6. 12. 2012 8:25:53) ● TRUE - Hw.Mem.: HDD ST950042 SAS (28 °C) < 55 °C (6. 12. 2012 8:25:53) ● TRUE - Hw.Mem.: HDD ST950042 SAS (28 °C) < 55 °C (6. 12. 2012 8:25:53) ● TRUE - Hw.Mem.: Current Voltage (12.09 V) IN <11.650; 12.690> V (6. 12. 2012 8:25:53)	SEANB08	JURAJ-HP	Topolova 4,	6. Dec 2012 08:25:55
● Miesto na disku		Free Space C: 67.79 GB±1 GB	5. Dec 2012 15:39:42	OK - because all conditions are true ● TRUE - Free Space on "C:" (67.79 GB) > 12 GB	SEANB08	JURAJ-HP	Topolova 4,	6. Dec 2012 08:25:55
● aktivita disku		Disk Activity 74%±5	6. Dec 2012 08:25:54	OK - because all conditions are true ● TRUE - Disk Activity™ (74%) < 96%	SEANB08	JURAJ-HP	Topolova 4,	6. Dec 2012 08:25:55

Image: Zobrazenie stavu watchu na CM portáli

Current Log from Watches viewed via C-Monitor client

View of the current log from watches through C-Monitor client in MonitorConsole. Watches Current Log is displayed on the next image and it captures every change of the Watch's state.

Description of columns of a Watch's current state:

Date Time - ddate and time of when the change of the Watch's state occurred

State change - captures changes of Watches' states

Name/Short Name - name of the Watch and its abbreviation, a green circle means that the Watch is in state OK, red - Fail, gray - Unknown

Value - values that are evaluated by the Watch

State Description - conditions to determine the state, which are evaluated along with the currently taken values

Date Time	State Change	Name / Short Name	Value	State Description
4. Dec 2012 Tue, 8:16:13	monitoring	w1	CPU Core #0 = 68 °C CPU Core #1 = 69 °C HDD ST950042 0A5 = 35 °C HDD ST950042 0A5 = 35 °C Current Voltage = 12.09 V	FAIL - because at least one condition is false ● FALSE - Hvi.Mon.: CPU Core #0 (68 °C) < 68 °C (4. 12. 2012 8:16:03) ● FALSE - Hvi.Mon.: CPU Core #1 (69 °C) < 68 °C (4. 12. 2012 8:16:03) ● TRUE - Hvi.Mon.: HDD ST950042 0A5 (35 °C) < 55 °C (4. 12. 2012 8:16:03) ● TRUE - Hvi.Mon.: HDD ST950042 0A5 (35 °C) < 55 °C (4. 12. 2012 8:16:03) ● TRUE - Hvi.Mon.: Current Voltage (12.09 V) IN <11.650;12.880> V (4. 12. 2012 8:16:03)
4. Dec 2012 Tue, 8:16:43	monitoring	w1	CPU Core #0 = 61 °C CPU Core #1 = 63 °C HDD ST950042 0A5 = 35 °C HDD ST950042 0A5 = 35 °C Current Voltage = 12.09 V	OK - because all conditions are true ● TRUE - Hvi.Mon.: CPU Core #0 (61 °C) < 68 °C (4. 12. 2012 8:16:33) ● TRUE - Hvi.Mon.: CPU Core #1 (63 °C) < 68 °C (4. 12. 2012 8:16:33) ● TRUE - Hvi.Mon.: HDD ST950042 0A5 (35 °C) < 55 °C (4. 12. 2012 8:16:33) ● TRUE - Hvi.Mon.: HDD ST950042 0A5 (35 °C) < 55 °C (4. 12. 2012 8:16:33) ● TRUE - Hvi.Mon.: Current Voltage (12.09 V) IN <11.650;12.880> V (4. 12. 2012 8:16:33)
4. Dec 2012 Tue, 8:21:43	monitoring	w1	CPU Core #0 = 55 °C CPU Core #1 = 56 °C HDD ST950042 0A5 = 36 °C HDD ST950042 0A5 = 36 °C Current Voltage = 12.09 V	OK - because all conditions are true ● TRUE - Hvi.Mon.: CPU Core #0 (55 °C) < 75 °C (4. 12. 2012 8:21:33) ● TRUE - Hvi.Mon.: CPU Core #1 (56 °C) < 75 °C (4. 12. 2012 8:21:33) ● TRUE - Hvi.Mon.: HDD ST950042 0A5 (36 °C) < 55 °C (4. 12. 2012 8:21:33) ● TRUE - Hvi.Mon.: HDD ST950042 0A5 (36 °C) < 55 °C (4. 12. 2012 8:21:33) ● TRUE - Hvi.Mon.: Current Voltage (12.09 V) IN <11.650;12.880> V (4. 12. 2012 8:21:33)
5. Dec 2012 Wed, 15:38:11	FAIL	Niešto na disku w2	Free Space C:\ = 67.78 GB	FAIL - because at least one condition is false ● FALSE - Free Space on "C:\\" (67.78 GB) > 10 GB
5. Dec 2012 Wed, 15:38:11	OK	aktivita disku w3	Disk Activity = 3%	OK - because all conditions are true ● TRUE - Disk Activity "" (3%) < 80%
5. Dec 2012 Wed, 15:38:11	FAIL	CPU usage w4	CPU System = 11%	FAIL - because at least one condition is false ● FALSE - CPU Usage "System" (11%) > 80%
5. Dec 2012 Wed, 15:38:41	OK	Niešto na disku w2	Free Space C:\ = 67.79 GB	OK - because all conditions are true ● TRUE - Free Space on "C:\\" (67.79 GB) > 10 GB
5. Dec 2012 Wed, 15:38:41	FAIL	aktivita disku w3	Disk Activity = 100%	FAIL - because at least one condition is false ● FALSE - Disk Activity "" (100%) < 80%
5. Dec 2012 Wed, 15:38:41	OK	CPU usage w4	CPU System = 1%	OK - because all conditions are true ● TRUE - CPU Usage "System" (1%) < 80%
5. Dec 2012 Wed, 15:40:11	FAIL	aktivita disku w3	Disk Activity = 100%	FAIL - because at least one condition is false ● FALSE - Disk Activity "" (100%) < 50%

Image: Zobrazenie aktuálneho logu z watches

To view older logs, go to the section Watches History, as it's shown on the next image

Date Time	State Change	Name / Short Name	Value	State Description
2012.12.04. 00:19:20.850	Watches Log			
2012.12.02. 23:18:21.898	Watches Log			
2012.11.30. 09:08:44.147	Watches Log			
2012.11.29. 16:32:39.979	Watches Log			
2012.11.27. 07:34:07.093	Watches Log			
2012.10.19. 09:04:26.676	Watches Log			
2012.10.16. 14:33:19.625	Watches Log			
2012.10.08. 08:48:18.536	Watches Log			
2012.09.05. 09:36:28.975	Watches Log			
2012.09.01. 19:04:46.652	Watches Log			
2012.08.31. 09:42:18.800	Watches Log			

Image: Zobrazenie histórie stavov watches

Current Log from Watches viewed via CM portal

Log from watches can be viewed on CM portal in the section *Presentation and Evaluation* -> *Watches (Online Monitoring)* -> select a concrete watch through the upper filter and click on its name, as

displayed on the following image.



Image: Vstup do zobrazenie Logu z Watchu

In the next window, choose the time period for which you want the log from the Watch's process to be displayed. In case there's more Watches for the same device, select one whose history you want to view, and press the button *Show*. By clicking on the button *Show graph*, you'll also see the Watch's course history as a graph.

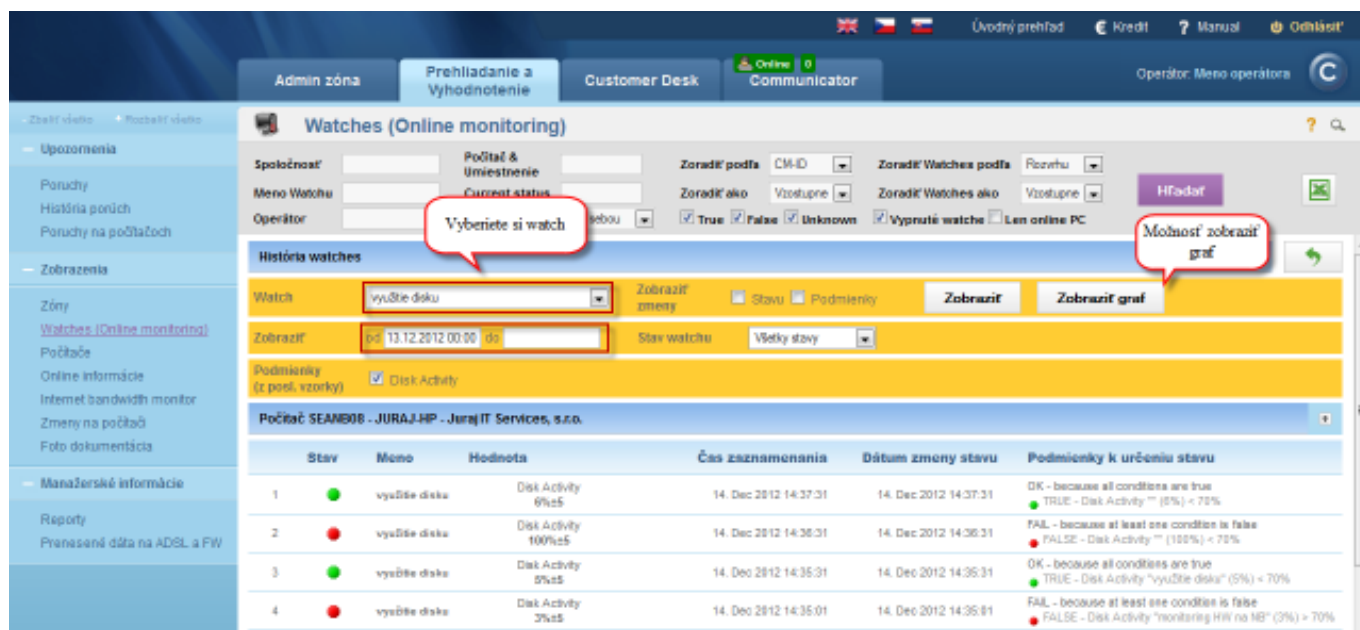


Image: Log z Watches

Date:

10/28/2012



[2]



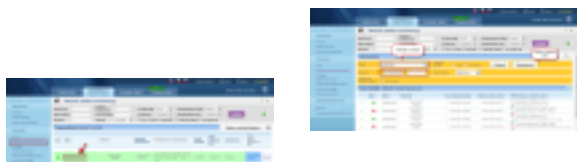
[3]



[4]



[5]



[6]

[7]

Links

[1] <https://customermonitor.co/how-cm-works-0/monitoring-and-diagnostics/introduction-setup-online-monitoring-watches>

[2] <https://customermonitor.co/sites/default/files/watch%20state%202.png>

[3] <https://customermonitor.co/sites/default/files/watches%20stavy.png>

[4] <https://customermonitor.co/sites/default/files/watches%20current%20log.png>

[5] https://customermonitor.co/sites/default/files/watches%20history_0.png

[6] <https://customermonitor.co/sites/default/files/zobrazenie%20historie%20watchu.png>

[7] <https://customermonitor.co/sites/default/files/cmonitor%20watch%20current%20log.png>