

The application is a support application of the C-Monitor, it serves to:

- creation, browsing and modification of lists of tasks, which should be launched by the application C-Monitor functional part
- mediation of information about running C-Monitor applications and their tasks
- accessing records, logs and history of C-Monitor activity

More information about individual sections of C-MonitorConsole can be found in the submenu

[Scheduling of tasks](#) [1] - procedure how to schedule a periodically launched task

[Synchronization of task launching](#) [2] - continuity of launching subsequent periodic tasks

[States of scheduled tasks](#) [3] - view of the current state of a scheduled task

[Watches states and logs](#) [4] - view of the current state of a Watch and log from history of its process

[System info](#) [5] - view of processes, which currently load the computer, and other system information

[Network info](#) [6] - information about load of network adapters

[Log with information about C-Monitor activity](#) [7] - C-Monitor Current Log

[Email communication from C-Monitor](#) [8] - information about communication between C-Monitor and CM Server

The application's window is divided to two basic parts - in the left part there's a navigation panel that serves to selection / switching of functional parts, categories that are displayed on the right part. On the following image, you can see the functional part "Scheduler".

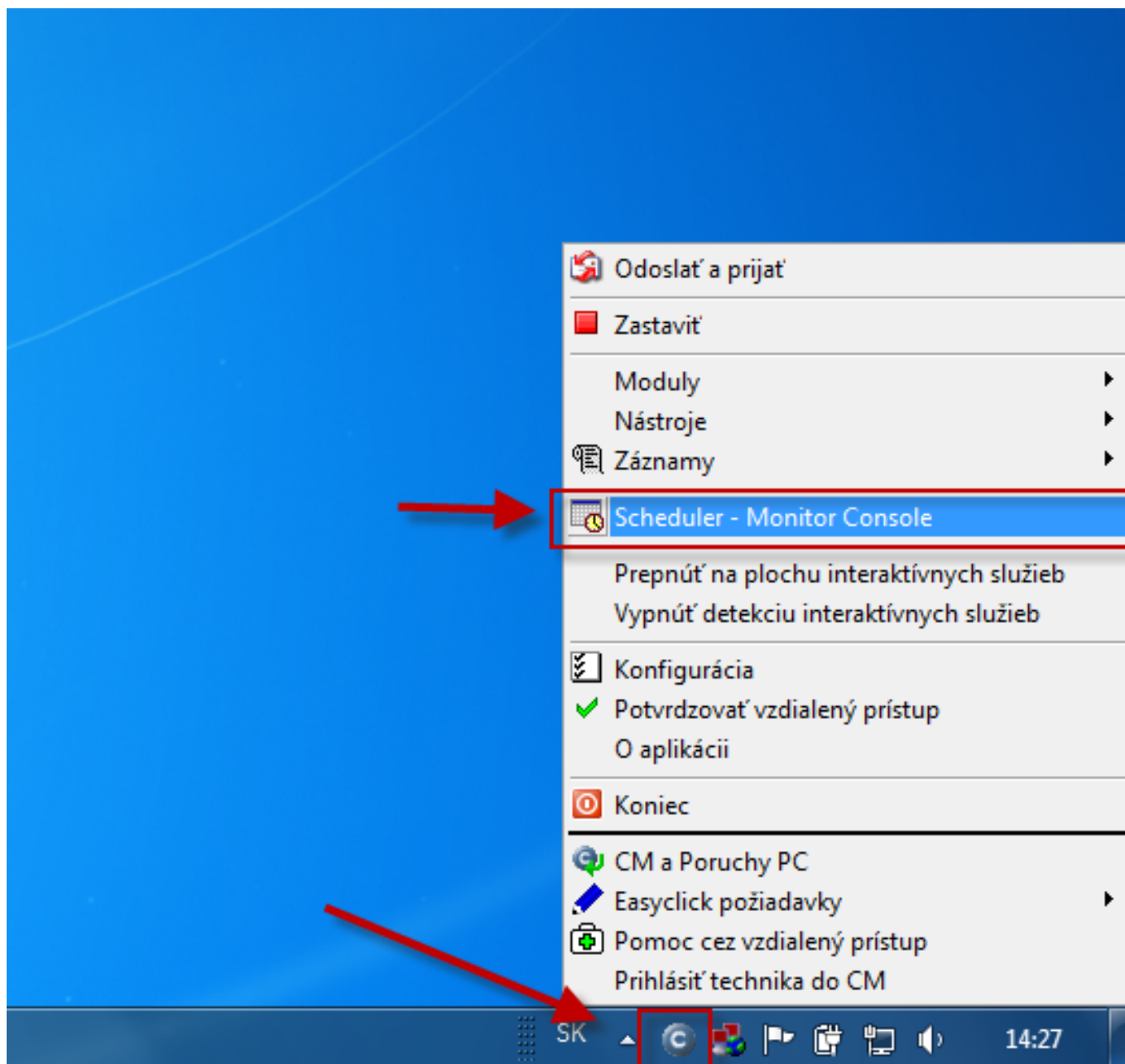


Image: Otvorenie funkčnej časti Scheduler

**Scheduler** is a part of the application C-MonitorConsole, which serves to creation, browsing and modification of lists of tasks, which should be launched by C-Monitor. The section Scheduler opens automatically after the application C-MonitorConsole is launched

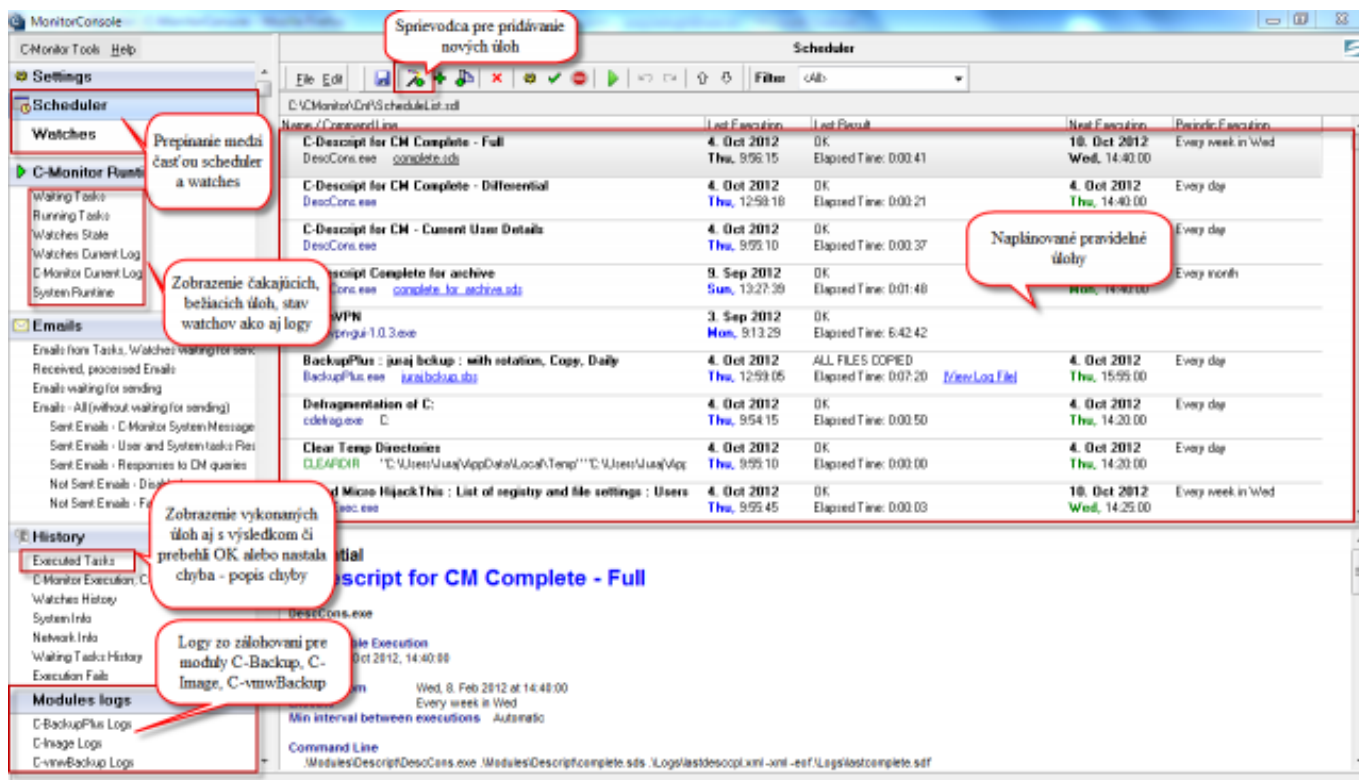
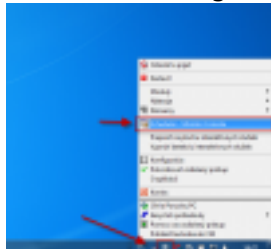


Image: Scheduler a popis jeho častí

Read more about C-MonitorConsole in the manual [C-MonitorConsole](#) [9].

Date:

09/30/2012



[10]



[11]

## Links

- [1] <https://customermonitor.co/how-cm-works-0/components-and-architecture-cm/c-monitor-windows-client/c-monitorconsole/scheduling>
- [2] <https://customermonitor.co/how-cm-works-0/components-and-architecture-cm/c-monitor-windows-client/c-monitorconsole-0>
- [3] <https://customermonitor.co/how-cm-works-0/components-and-architecture-cm/c-monitor-windows-client/c-monitorconsole/status>
- [4] <https://customermonitor.co/how-cm-works-0/components-and-architecture-cm/c-monitor-windows-client/c-monitorconsole/watches>
- [5] <https://customermonitor.co/how-cm-works-0/components-and-architecture-cm/c-monitor-windows-client/c-monitorconsole/system-info>
- [6] <https://customermonitor.co/how-cm-works-0/components-and-architecture-cm/c-monitor-windows-client/c-monitorconsole/network-info>
- [7] <https://customermonitor.co/how-cm-works-0/components-and-architecture-cm/c-monitor-windows-client/c-monitorconsole/log>
- [8] <https://customermonitor.co/how-cm-works-0/components-and-architecture-cm/c-monitor-windows-client/c-monitorconsole/email>
- [9] <https://www.customermonitor.sk/podpora/manualy/manualy-k-vybranym-produktom/c-monitorconsole>

[10] [https://customermonitor.co/sites/default/files/otvorenie%20schedulera\\_4.png](https://customermonitor.co/sites/default/files/otvorenie%20schedulera_4.png)

[11] <https://customermonitor.co/sites/default/files/scheduler%20a%20popis%20jeho%20casti.png>